

Zuvo Water Filtration System

Installation Guide

The Zuvo® Water Filtration System is designed to connect to a separate, dedicated Zuvo™ Beverage Faucet mounted on your sink top.

Installation is straightforward and most “do-it-yourself” types will find it relatively easy. If you are uncomfortable working with or around plumbing, enlist the help of a licensed plumber.

1. UNPACKING AND INSPECTION

Unpack all pieces and insure that you have all components listed below. If any parts are missing contact Zuvo Water or your Zuvo Water dealer.

Zuvo Water Filtration System

NOTE: Actual appearance of Zuvo system, faucet style and finish varies by model

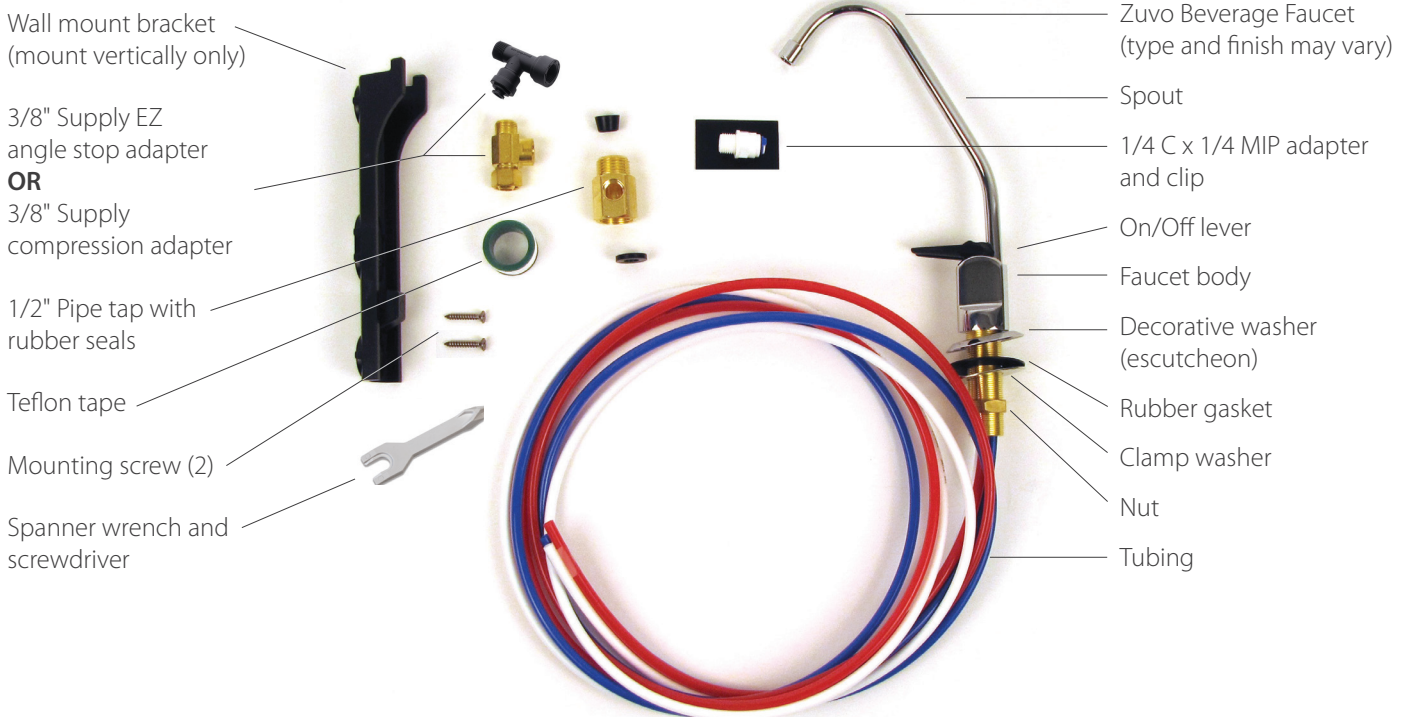










Figure 1

Zuvo Water Filtration System Installation Components

Item	Purpose
 <p>Zuvo Water Filtration System</p>  <p>Zuvo Beverage Faucet Assembly NOTE: Actual appearance of Zuvo system, faucet style and finish varies by model</p>	<p>Water filtration system and above sink, dedicated faucet. Water treated by the Zuvo Water Filtration System is dispensed from the faucet. RED, WHITE and BLUE tubing.</p> <p>WARNING: Do not use any faucet other than the one supplied by Zuvo Water. Failure to follow these instructions may void your warranty and/or damage your Zuvo unit.</p>
 <p>1/2" Pipe Tap (1/2" MSJ x 1/2" FSJ Adapter) with Rubber Seals</p>	<p>Brass plumbing fitting that attaches to cold water supply shut off valve. 1/2" Male Slip Joint (MSJ) x 1/2" Female Slip Joint (FSJ). Use if your shutoff valve has 1/2" thread.</p>
 <p>3/8" Supply EZ Angle Stop Adapter OR 3/8" Supply Compression Adapter</p>	<p>Plastic or brass plumbing fitting that attaches to cold water supply shut off valve. Use if your shutoff valve has 3/8" thread.</p>
 <p>1/4" C x 1/4" MIP Adapter and Clip</p>	<p>Plastic plumbing fitting with 1/4" pipe thread and 1/4" quick connect fitting that attaches to the 1/2" pipe tap or 3/8" supply compression adapter to allow cold water to be diverted to the Zuvo Water Filtration System.</p>
 <p>Teflon® Tape</p>	<p>Teflon® "plumber's" tape used to wrap male pipe threads to prevent leaking in tapered thread joints.</p>
 <p>Wall mount bracket and screws</p>	<p>Plastic bracket for securely mounting Zuvo Water Filtration System to under-counter wall.</p> <p>WARNING: Mount bracket vertically to ensure proper system installation.</p>
 <p>Combination spanner wrench and screwdriver</p>	<p>Spanner wrench for removing the screw on the base of the Zuvo unit (to remove the UV lamp assembly).</p>

2. TOOLS REQUIRED

For installation into an existing hole in sink

 <p>Adjustable wrench</p>	 <p>Scissors or shears to trim plastic tubing</p>	 <p>Pliers</p>
---	---	--

Additional tools necessary to drill a 1-inch hole in sink

 <p>Drill</p>	 <p>1" diamond core drill bit for granite sinks</p>	 <p>Step drill bit for metal sinks</p>
---	---	--

NOTE: A drill and screwdriver are recommended for installing the optional wall-mount bracket.

3. ZUVO WATER FILTRATION SYSTEM INSTALLATION INSTRUCTIONS

Prior to installing the Zuvo Beverage Faucet, select a suitable under-counter location for mounting or placing your Zuvo unit. The Zuvo unit should be mounted/located no more than about 3 feet from beneath the Zuvo Beverage Faucet.

NOTE: The Zuvo unit requires a Ground Fault Circuit Interrupter (GFCI) outlet that is unswitched. If the outlet you plan to plug the Zuvo unit into is not a GFCI outlet and/or is a switched outlet, consult an electrician.

Zuvo Water Filtration System Assembly Overview

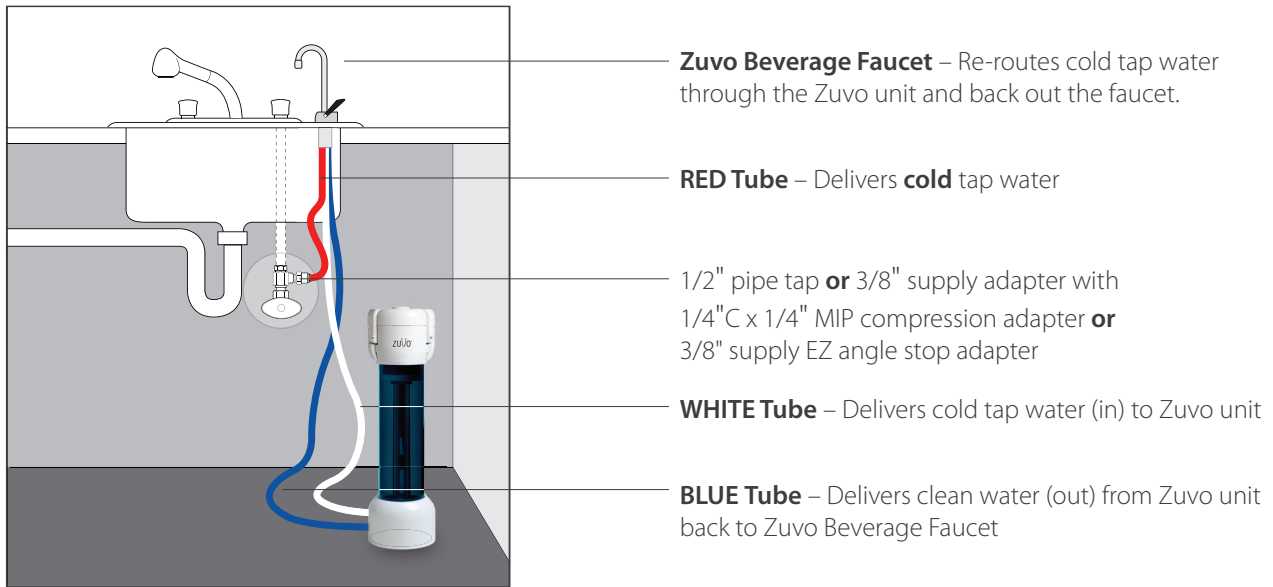


Figure 2

It is possible that a capped hole already exists on the lip of your sink for an auxiliary dispenser or faucet. Using it will make for the easiest installation.

If there isn't an existing hole, you will need to drill the 1" hole required for the faucet. Hole location will vary depending on sink type.

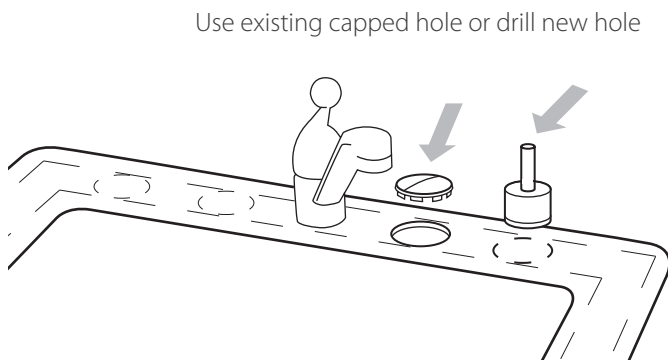


Figure 3

CAUTION!

If you have a granite, porcelain enamel, stainless steel or other non-metallic sink and need to drill a hole for the Zuvo Beverage Faucet, consider hiring a professional, licensed contractor to perform this work. However, with commonly available tools you can do this yourself.

When drilling a hole in a metal sink, make sure to plug the drill into a Ground Fault Circuit Interrupter (GFCI) outlet. Do not come into contact with water at any time.

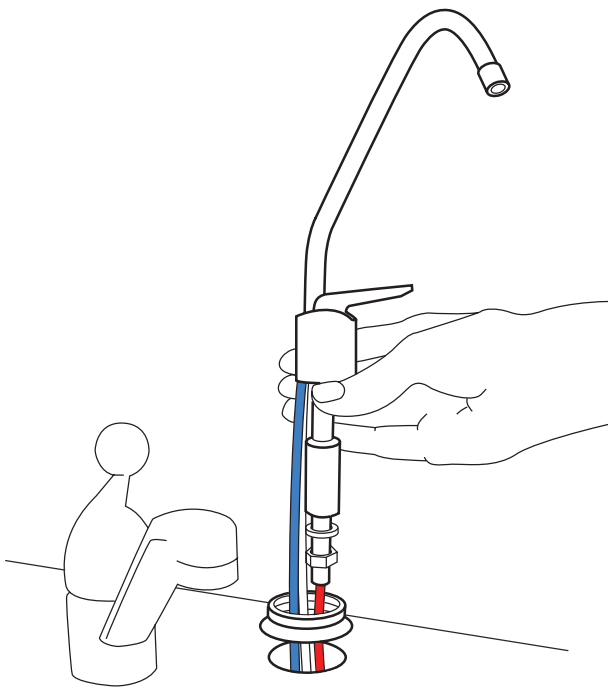


Figure 4

When drilling a new hole, ensure you have proper clearance beneath your sink (for the attachment of retaining nut, etc.).

Make sure that the under-counter location you have selected for your Zuvo Water Filtration System is within 3 feet of the Zuvo Beverage Faucet.

Insert the Zuvo Beverage Faucet spout into the faucet body.

Unscrew and remove the nut and slotted washer from the faucet assembly. Leave the decorative washer and rubber gasket on the stem of the faucet assembly.

Feed the RED, WHITE, and BLUE tubing through the hole and position the faucet.

From beneath the counter, first slide the slotted washer then the hex nut over the tubing up to the base of the faucet. Hand-tighten the nut to hold the faucet in position while you complete the installation.

4. PREPARATION OF THE ZUVO WATER FILTRATION SYSTEM

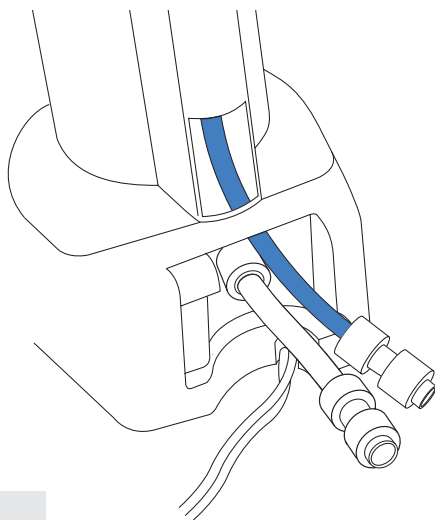


Figure 5

The required tube attachments and quick-connect fittings for the installation are depicted in **Figure 5**.

5. 1/2" PIPE TAP OR 3/8" SUPPLY COMPRESSION ADAPTOR INSTALLATION

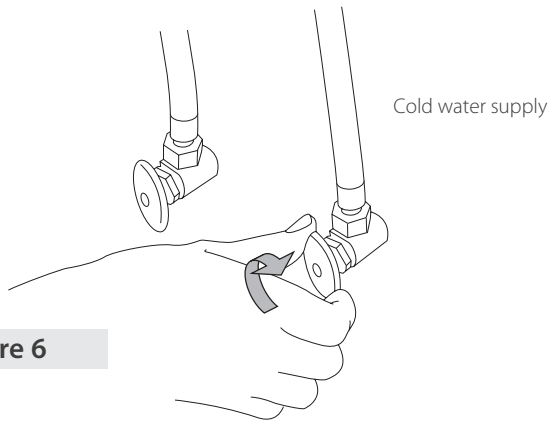


Figure 6

Turn off cold water supply shutoff valve

Turn off the cold water supply by turning the shut off valve handle all the way to the right.

Test your faucet to ensure there is no cold water flow. Place a bucket or pan on the floor under the cold water supply in the event that a small amount of water drains down from the sink.

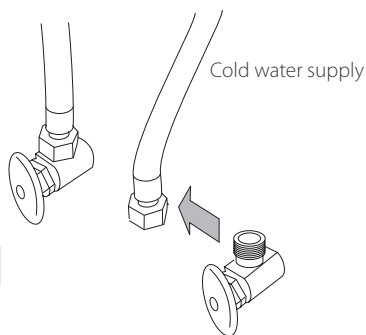


Figure 7

Move cold water supply line (riser) away from shutoff valve

Typically, there is a flexible hose with a 3/8" or 1/2" thread fitting that connects the cold water supply line from your faucet to the cold water shutoff valve. Remove this at the junction of the cold water shutoff valve. **An adjustable wrench is likely required to remove the compression nut.**

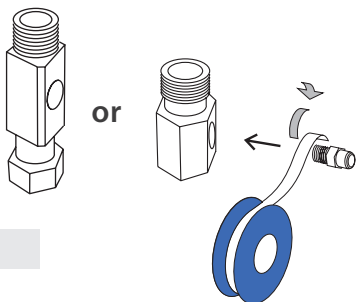


Figure 8

Note: If your parts kit came with the black 3/8" supply EZ angle stop adapter skip this step.

Wrap Teflon® tape firmly around threads on 1/4" C x 1/4" MIP adapter (4-5 times). Thread the adapter into the 1/2" pipe tap or 3/8" supply compression adapter until firmly seated.

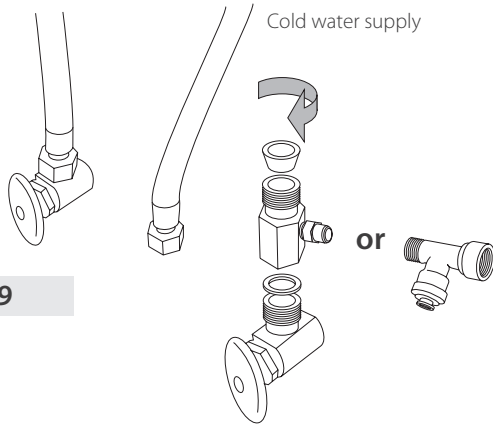


Figure 9

Attach 1/2" or 3/8" adapter to cold water supply shutoff

Depending on your shutoff valve thread size, install the 1/2" pipe tap **or** the 3/8" supply adapter on the cold water shutoff valve.

NOTE: When installing the 1/2" pipe tap, you will need to use the flat rubber washer in the female threads and you may need to use the cone rubber washer on the side with the male threads if your riser does not have a rubber seal.

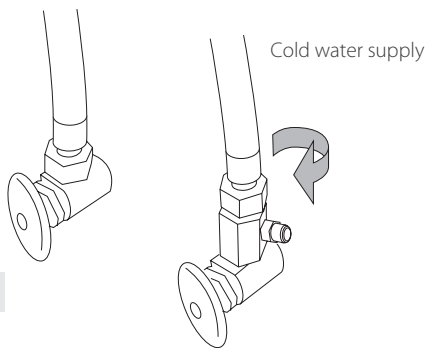


Figure 10

Reconnect the flexible hose to the 1/2" pipe tap **or** the 3/8" supply adapter. Use adjustable wrench to tighten nut securely.

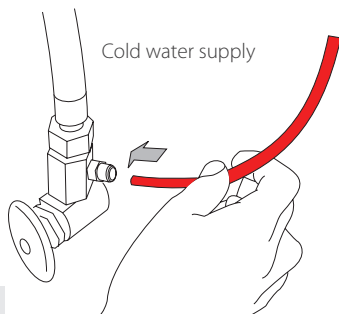


Figure 11

AVOID CUTTING THE TUBING TOO SHORT!

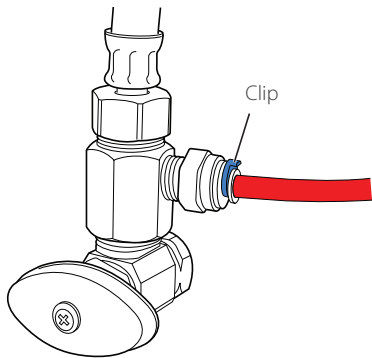
It is recommended that you leave enough tubing length so that the entire Zuvo Water Filtration System can be removed from your under counter cabinet – without disturbing established plumbing connections when it comes time to replace the filter.

Using scissors, trim the RED tubing, coming from the Zuvo Beverage Faucet, to the desired length.

Insert the RED tubing into the 1/4" quick connect compression fitting until fully seated.

Pull RED tubing firmly to ensure that tubing does not come free.

Figure 12



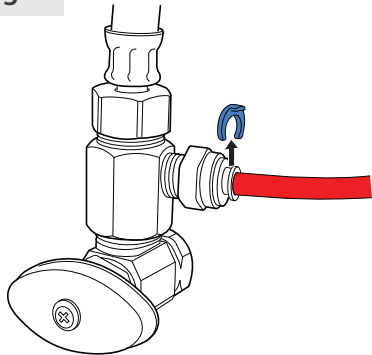
The next four steps describe how to disconnect the tubing from the 1/4" compression adapter.

If you are satisfied with the length of the tubing, and don't need to disconnect the tubing for some other reason, skip to Section 6. Plumbing Connections.

To remove the tubing from the quick-connect compression adapter.

Locate the small C-shaped clip on the white 1/4" quick-connect compression adapter.

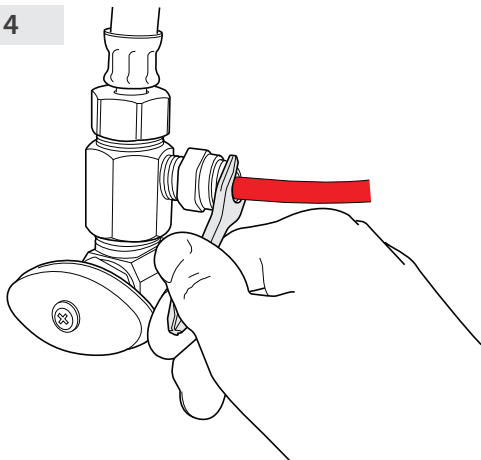
Figure 13



Remove clip from compression adapter

Remove C-shaped clip on the white 1/4" compression adapter.

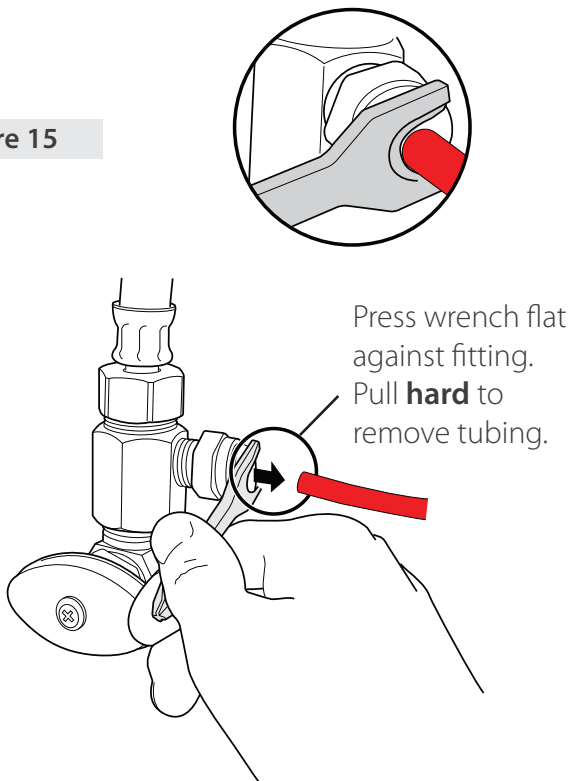
Figure 14



Place spanner wrench against flange of compression adaptor

Once the clip is removed, use the flat side of the spanner wrench to release the lock ring by pressing it against the flange of the white 1/4" compression adapter.

Figure 15



Release tubing

While holding the lock ring in place against the flange, use other hand to pull (hard) on the tubing to release it from the 1/4" compression adapter.

6. PLUMBING CONNECTIONS

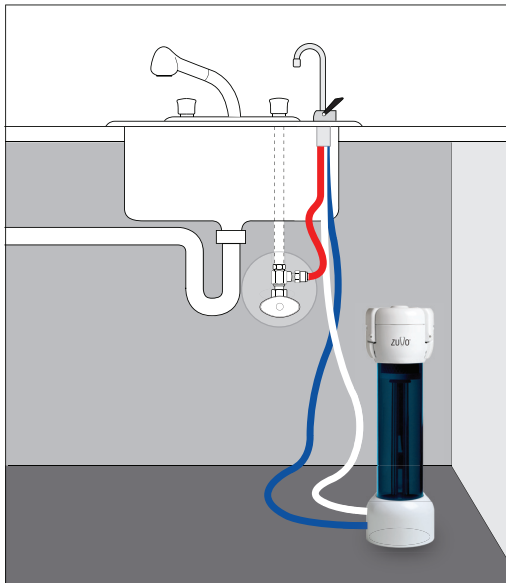


Figure 16

The basic interconnections for the separate faucet installation are shown in **Figure 16**.

NOTE: The plastic tubing connections used in this installation are a self-locking, self-sealing type. All that is required to make the connections is to insert the tubing fully into each quick-connect fitting. If you need to remove the tubing, use the spanner wrench to hold the lock-ring against the flange and pull the tubing away from the fitting as shown in **Figures 14** and **15**.

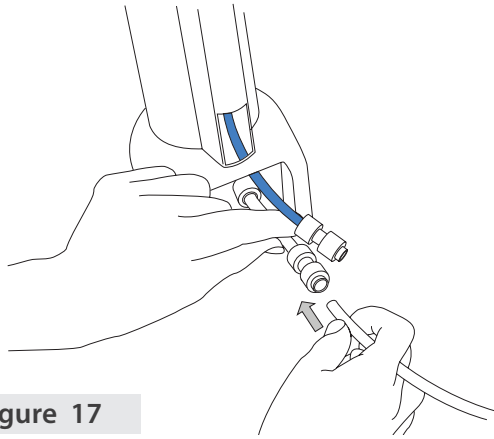


Figure 17

Simply connect the WHITE tubing from the faucet to the quick-connect fitting attached to the WHITE tubing on the Zuvo Water Filtration System as shown in **Figure 17**.

Similarly, connect the BLUE tube from the faucet to the quick-connect fitting attached to the BLUE tubing on the Zuvo unit. Ensure both tubes are inserted into the fittings until they stop and cannot be pushed in further.

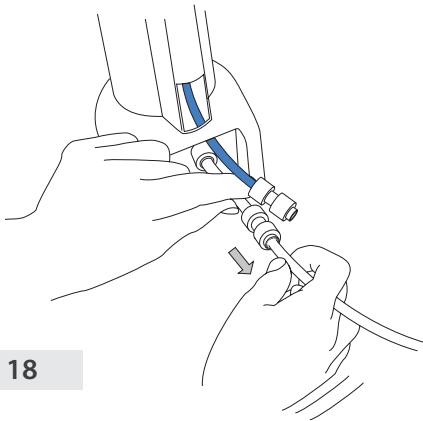


Figure 18

Pull on tubes to be sure they are seated properly

Firmly pull on WHITE and BLUE tubing to ensure that they are tightly held in the quick-connect fittings. The tubing should not come free. If either tube disconnects from the quick-connect fitting, re-insert it until fully seated and perform the pull test again.

Place a clip on each of the compression fittings to secure them.

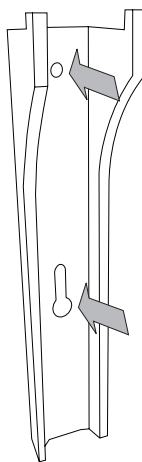


Figure 19

Attach optional wall mount bracket vertically

Use two screws to attach wall mount bracket vertically to cabinet wall under sink. You may need to pre-drill the two holes with a #32 drill bit (max). Ensure that bracket is attached high enough to provide clearance to hang the Zuvo Water Filtration System.

WARNING: Mount bracket vertically to ensure proper operation.

NOTE: Once the unit is installed below the counter, out-of-sight, it should be inspected periodically to ensure the lamp is operating.

7. PLUMBING CHECKOUT

Open the cold water shutoff valve and visually verify that water is not leaking from around the threads of: 1) the 1/2" pipe tap OR 3/8" supply adapter, 2) the 1/4" compression adapter and RED tubing, and 3) the quick-connect fittings and WHITE and BLUE tubing.

After you are certain there are no leaks, fix the position of the Zuvo Beverage Faucet by tightening the hex nut at the bottom.

8. SYSTEM CHECKOUT

Ensure that the Zuvo Water Filtration System is plugged into an electrical outlet.

NOTE: Do not use an outlet that is intended for a garbage disposal as power to this outlet is controlled by a switch.

Ensure that the faucet arm is fully inserted into the faucet base. The two O-ring seals on the bottom of the arm should form a snug fit in the faucet base, but allow the arm to swivel.

The Zuvo Water Filtration System can be turned on by pressing down and holding the faucet lever or by flipping the lever up. (NOTE: Varies by faucet type.)

Depending on faucet model, flip the lever on the faucet base upward or turn lever down. This should light up the UV lamp and initiate water flow through the Zuvo Water Filtration System. You should observe a swirling upward motion of water as well as a constant stream of bubbles when the unit is on. If there is no flow, close the faucet lever and check to make sure the cold water supply is open, then retry lifting the faucet lever to turn on the system. If water is filling from the top of the Zuvo unit rather than swirling up from the bottom, you have crossed the BLUE and WHITE tubing attachments. You need to disconnect and reverse these.

IMPORTANT

After first installing your Zuvo Water Filtration System or when changing the filter, always allow water to flow through the Zuvo system until the light and/or buzzer indicates it is ready.

It is normal for water to continue to flow from the Zuvo Beverage Faucet for three to four seconds after it is turned off. There is cleansed water downstream of the shutoff valve that drains out of the Zuvo Beverage Faucet. To avoid wasting water, we suggest turning the Zuvo Beverage Faucet off just before you've poured the desired amount of water.

It is a normal part of the Zuvo Water Filtration System operation for the UV lamp to remain on for about 20 – 30 seconds after use.

CONGRATULATIONS! YOUR INSTALLATION IS COMPLETE.



Zuvo Water LLC
404 Villa Street
Mountain View CA 94041

Tel: 866.686.8142
info@zuvowater.com

zuvowater.com